



BIG GAME HUNT AT KWALATA SAFARIS IN ZAMBIA



Our partner in Zambia currently holds the hunting rights for some of the best hunting districts in Zambia, and provides large numbers of top quality trophies to visiting hunters. Do you dream of fantastic hunting in "the real" Africa? If so, this could be just the hunting tour for you.



Challenging hunt



Requires moderate level of fitness



Accommodation in a cabin



Accommodation in a lodge



Accommodation in a tent



Big Game



Spot-and-Stalk Hunt

HIGHLIGHTS & DESCRIPTION

Big Game hunt at Kwalata Safaris in Zambia



Overview

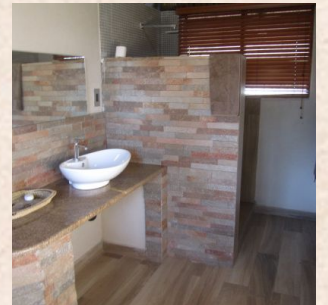
HIGHLIGHTS

**DO YOU HAVE
QUESTIONS?**


ACCOMMODATION Kwalata Safaris



The camp is one of the best in Luangwa and has a beautiful setting on the banks of the river. It is a permanent camp with 5 thatched buildings, attractive rooms with private bathroom and toilet, and cosy common/dining rooms.



DO YOU HAVE
QUESTIONS?



PARTNER
Kwalata Safaris



Kwalata Safaris with Peter Chipman and Sarge Karim have now been helping make our demanding safari clients' wildest Africa-dreams come true for more than 10 seasons. The combination of outstanding hunting districts and highly professional personnel has resulted in our clients shooting many excellent trophies. We have had a good number "repeat customers" who have hunted with this outfitter many times. They are unanimous in praising the outstanding - an apparently very addictive - safari atmosphere found on these hunts. All their hunting districts lie well off the beaten track, and are not really suitable for non-hunting guests.



**DO YOU HAVE
QUESTIONS?**

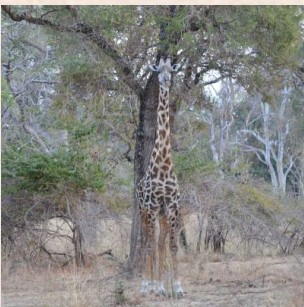
HUNTING AREA

Nyamvu Game Reserve



This private hunting area of approximately 350 square kilometers is located in the Luangwa Valley neighboring West Petauke G.M.A., the Muchinga Escarpment and the life giving Luangwa River. Considering how remote this area is, the camp is beautiful and fully modern with hot and cold running water, flush toilets, generated and solar electricity, electric and gas refrigerators, WiFi and cellular service. The camp can be reached by private charter flight (current cost quoted on request) or by driving approximately 6.5 hours from Lusaka. Round trip road transfer is approximately \$1,000.00 per vehicle. Wes' thoughts on this area, having hunted and shared safaris with many friends here... "Without a doubt, if I had to pick the strongest selling point of this area it would be Roan Antelope. The only other place I have hunted in Africa where numbers and trophy quality can compare is Cameroon. If you want to see a lot of Roan and have the opportunity to harvest a big Bull Roan, this is as good as it gets. The area also has a good population of Sable and Big Tom Leopards. For some reason these hills always produce some outstanding toms every year. In addition you will also find lots of good Chobe Bushbuck, Greater Kudu, Common Waterbuck, Crocodile and Hippo!" In addition to; Cape Buffalo, Elephant, Lion, Lichtenstein's

Hartebeest, Puku, Zebra, Impala, Civet Cat, Common Duiker, Hyena, Bushpig, Klipspringer, Warthog, Baboon and Vervet Monkey.

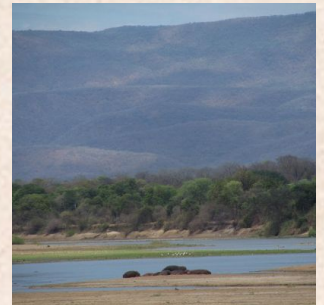
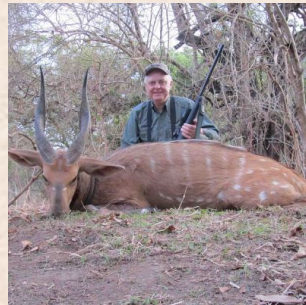
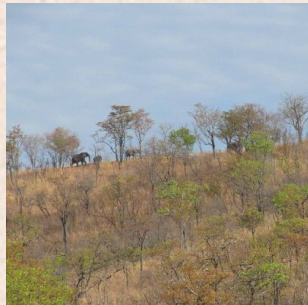


DO YOU HAVE
QUESTIONS?

HUNTING AREA Nyakolwe Game Reserve



This private hunting area is approximately 550 square kilometers in size. Located in the Luangwa Valley bordering the Southern boundary of the South Luangwa National Park, the Chisomo Game Management Area, the Luangwa River and the Muchinga Escarpment. We have two camps in this area: Nyala Camp and the Rehana Camp. Game hunted here: Baboon, Burchell's Zebra, Cape Buffalo, Chobe Bushbuck, Civet Cat, Common Waterbuck, Common Duiker, Crocodile, Elephant, Hippo, Hyena, Impala, Klipspringer, Kudu, Leopard, Lion, Lichtenstein's Hartebeest, Puku, Roan, Vervet Monkey and Warthog. This area can be reached by driving approximately 7.5 hours from Lusaka or by private air charter (both priced upon request).



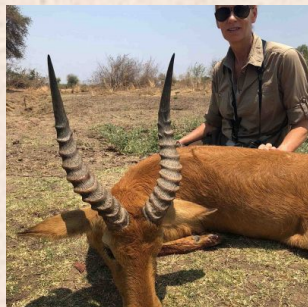
**DO YOU HAVE
QUESTIONS?**

HUNTING AREA

Mwanya Game Management Area



Mwanya, pronounced "Wanya," is north of Lupande in the Luangwa Valley. This area shares its west boundary with the South Luangwa National Park and its east boundary with the Lukusuzi National Park, encompassing approximately 1,500 square kilometers. This area can be reached by road and by plane. The preferred method of travel to/from Mwanya is by daily commercial flights from Lusaka to the Mfuwe Airport. This is a one hour flight and costs approximately \$600.00 per person round trip (price is subject to change). Mwanya is an excellent dangerous game area with Buffalo and Leopard populations, it has a very impressive Plains Game population as well. Animals found here include Burchell's Zebra, Chobe Bushbuck, Cape Buffalo, Common Waterbuck, Cookson Wildebeest, Crocodile, Duiker, Elephant, Grysbok, Hippo, Hyena, Imapala, Kudu, Leopard, Lichtenstein's Hartebeast, Lion, Livingstone Eland, Puku, Roan, Steenbok and Warthog.



DO YOU HAVE
QUESTIONS?

HUNTING AREA MuFunta Area

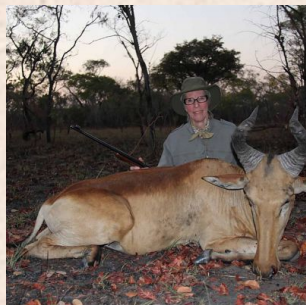


Sable Heaven

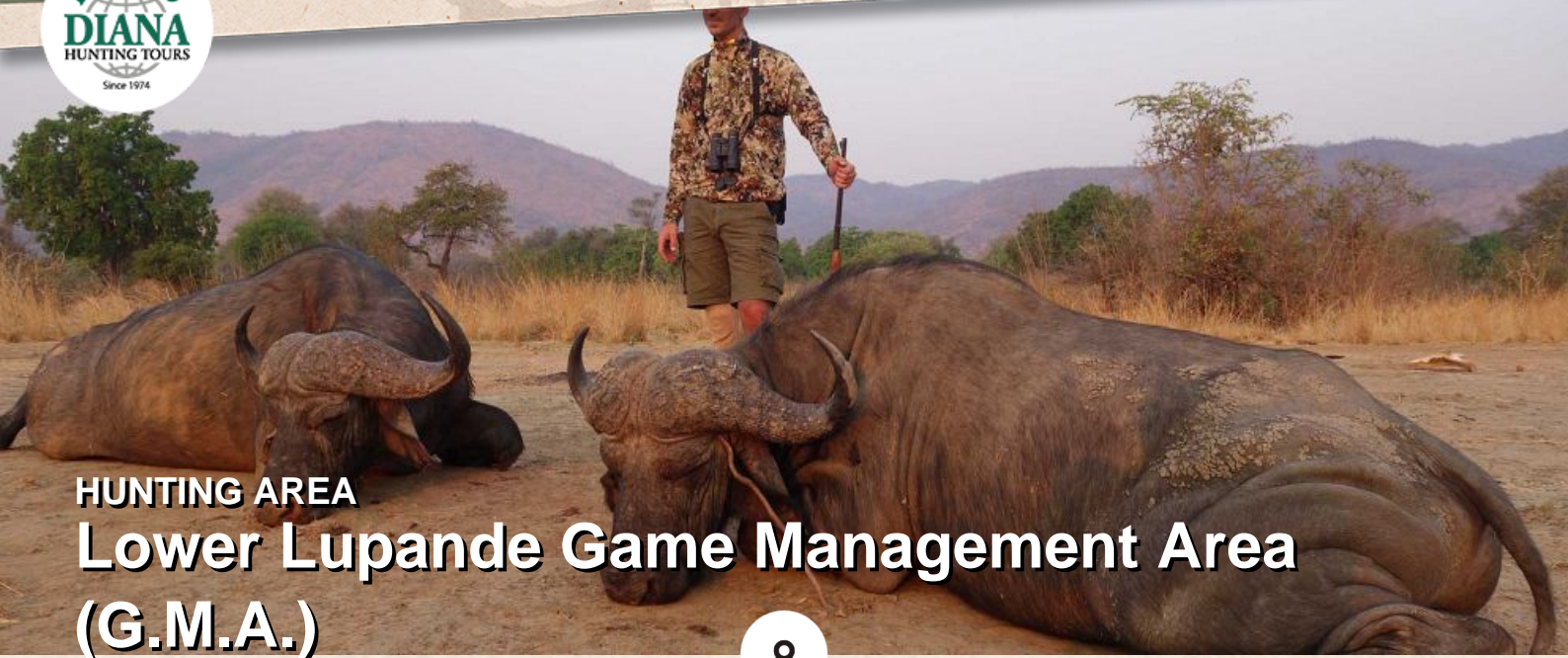
This giant area of approximately 2, 200 square kilometers is located in the far west of Zambia. We often refer to it as the “wild, wild west” with its Eastern boundary bordering the Kafue National Park, its Northern boundary being Kasowso Busanga G.M.A. and its Southern boundary being Bill Bill and Mulobezi G.M.A.’s. Wes’ thoughts and reflections, “This is my favorite part of the country of Zambia. I love the Miombo Woodlands and long grass here, the cold, frosty mornings of June, July and August while spotting and stalking the game you pursue. Without a doubt, the Sable hunting here is world class. I have personally taken Sable here measuring up to 48.5 inches!”.

In addition to world class Sable, the following animals live here in good to excellent numbers: Bushpig, Civet Cat, Common Duiker, Grysbok, Kudu, Leopard, Lion, Lichtenstein’s Hartbeest, Oribi, Common Reedbuck, Roan and Warthog. The following animals are hunted here; however, encountered less frequently: Bushbuck, Cape Buffalo, Impala and Livingstone Eland. We have a beautiful tented safari camp with three guest tents, each having

there own en-suite bathrooms with showers, toilets and sinks. Electricity is generated and solar panels, with all walk ways and tent front porches having oil lanterns. The best way to reach camp from Lusaka is by driving. It’s a 7 hour trip through some of the most beautiful, scenic, game rich country Africa has to offer, crossing the Kafue River and the Kafue National Park.



**DO YOU HAVE
QUESTIONS?**



HUNTING AREA Lower Lupande Game Management Area (G.M.A.)



Located in the South Luangwa Valley sharing approximately 70 kilometers of boundary with the South Luangwa National Park and the Luangwa River. This area is reached by road and by plane. The preferred method of travel to reach Lower Lupande is by daily commercial flights from Lusaka to Mfuwe Airport. This is a one hour flight and costs approximately \$600.00 per person round trip (price is subject to change). It's a short drive from the Mfuwe Airport to the camp. Lower Lupande is an excellent dangerous game area with excellent populations of Cape Buffalo, Crocodile, Elephant, Hippo, Leopard and Lion. Plainsgame most often encountered here are Baboon, Burchell's Zebra, Chobe Bushbuck, Common Waterbuck, Duiker, Grysbok, Hyena, Impala, Klipspringer, Kudu, Steenbok, Vervet Monkey and Warthog.



**DO YOU HAVE
QUESTIONS?**



HUNTING AREA Kafue Flats



Lechwe Safaris.

Most of these safaris are conducted as follows: Our hunters arrive in Lusaka the afternoon prior to their hunt. Our staff will meet you upon arrival and escort you to the hotel of your choice or the hotel of our office staff's choice. Early the next morning our professional hunter and his trackers will pick you up and drive you to Lochinvar/The Kafue Flats (the only place on the African continent to hunt Kafue Lechwe.)

It's a hunting experience you will never forget as you normally see hundreds and hundreds of Kafue Lechwe. It's similar to hunting Antelope in the United States. Like Antelope, it seems Kafue Lechwe have a built-in range finder. Unless you are lucky, you will make multiple stalks until you harvest your trophy Kafue Lechwe. A flat shooting long range rifle makes the task easier. After harvesting your Lechwe you will return to Lusaka that afternoon, overnight and continue your African travels the next day.



**DO YOU HAVE
QUESTIONS?**

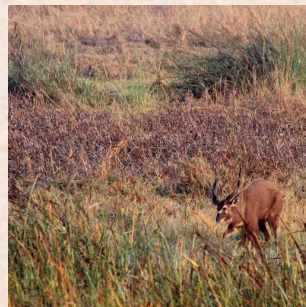
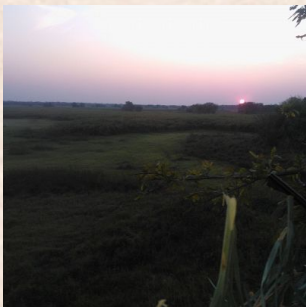
HUNTING AREA Illinda Area



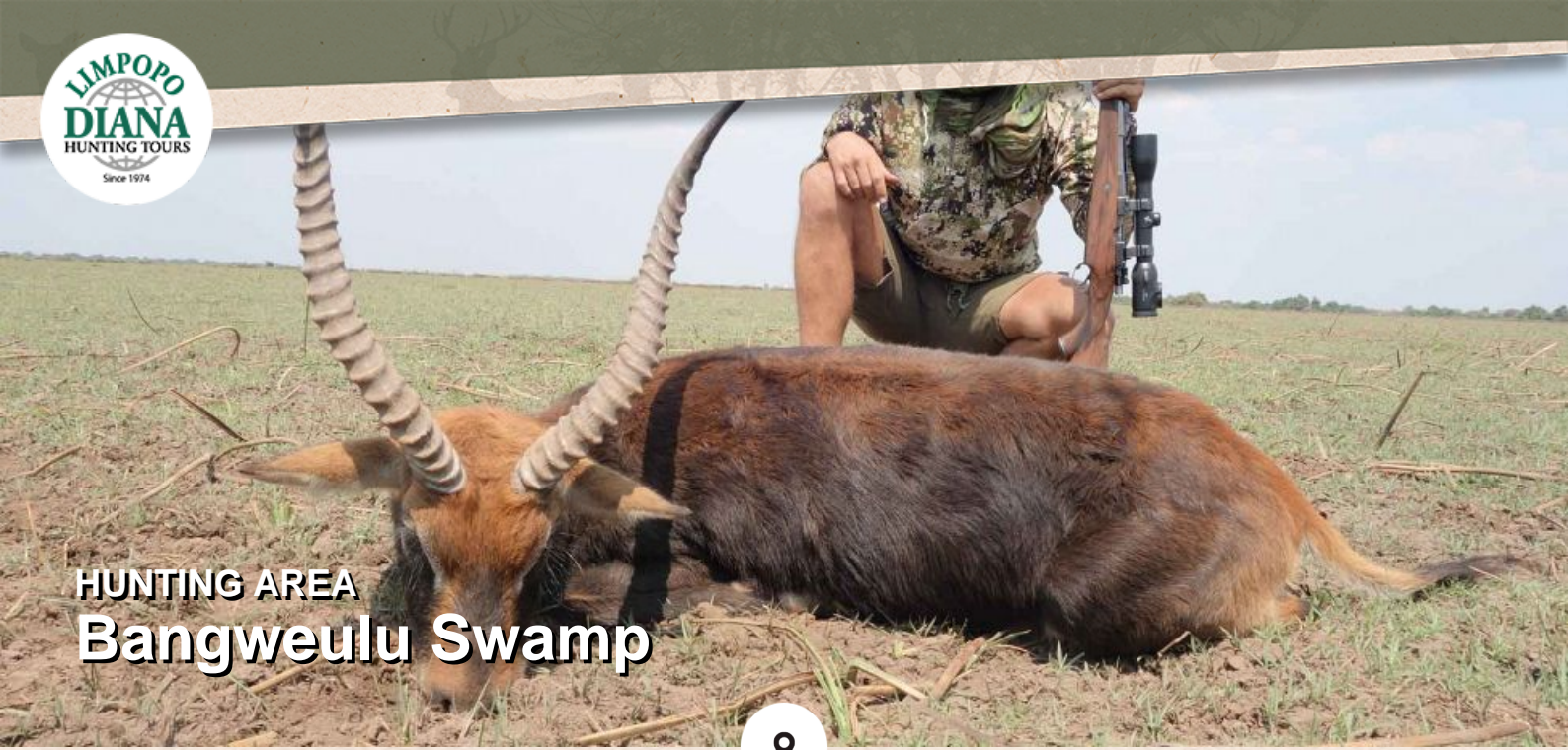
Sitatunga and Sable.

This area is approximately 110,000 acres in size and located in the Northwest of Zambia along the west boundary of the Kafue National Park. Also joining Kasowso Busanga and Lunga Busanga G.M.A.'s. The two strong points of this area are Zambezi Sitatunga and Sable. Also found here are Bushpig, Bushbuck, Duiker, Grysbok, Kudu, Lichtenstein's Hartebeest, Oribi and Warthog.

The camp can be reached by driving approximately 8 hours from Lusaka or a 1 hour charter flight that lands 40 minutes from the camp. The camp is remote yet clean and comfortable; sleep in the sheets, hot showers, good food and service that includes your laundry, washed and ironed daily. Again, this is one of the few places where you can combine Sitatunga and Sable. View trophy photos above and additional camp photos below.



DO YOU HAVE
QUESTIONS?



HUNTING AREA
Bangweulu Swamp



Zambezi Sitatunga and Black Lechwe Safaris.

These safaris take place in the Bangweulu Game Management Area; most often referred to as the Bangweulu swamp. It is located in North Central Zambia. The reason for traveling to this area is to hunt the Black Lechwe, Zambezi Sitatunga, Tsessebe, Reedbuck and Oribi. This is the only place in Africa that the Black Lechwe is totally wild and free ranging. They number in the thousands. Often the most difficult task is getting a big Lechwe bull separated from the heard for your shot.

Sitatunga numbers are very good here as well. These hunts are normally conducted from a machan (elevated blind) at or near the swamps edge. From you machan you will glass the papyrus reeds from day break for the first two hours of the morning and the last two hours of the day trying to locate a trophy class bull feeding or traveling to bed. Also present in the Bangweulu area you will find Tsessebe (many of the top records book heads have been taken in the Bangweulu area), lots of Oribi and good numbers of Reedbuck as well. The camp here is a tent camp with flush toilets and showers. This area is best accessed by charter flight from

Lusaka approximately 90 minutes each way, with the approximate cost being \$5,000.00 U.S.D. for the private charter. A safari conducted here normally has the following schedule: Day 1, arrive to camp and hunt that afternoon time permitting, hunt day 2, 3, 4, 5, 6, and fly back to Lusaka on day 7.



**DO YOU HAVE
QUESTIONS?**

HUNTING AREA

West Petauke Game Management Area



Located in the Southern tip of the Luangwa Valley, encompassing more than 1,000 square kilometers with its Eastern boundary being much of the Luangwa River. The following species of animals are encountered here: Cape Buffalo, Chobe Bushbuck, Crocodile, Duiker, Elephant, Grysbok, Hyena, Hartebeest, Hippo, Impala, Kudu, Leopard, Lion, Puku, Roan, Waterbuck and Warthog. The main camp is built on the banks of the Luangwa River with a pretty view that keeps our guests entertained while enjoying watching lots of game come down to the river and drink. Here the camp is traditional thatch, very similar to the old safari days. However it offers showers, toilets, clean sheets, towels, daily laundry service, excellent meals, gas, electricity, WiFi and more. The area can be reached by vehicle, approximately 7 hours drive from Lusaka, or by private air charter. The cost for these services are quoted upon booking your safari.

*DO YOU HAVE
QUESTIONS?*

Price and info on your tour

Specification of price

Prices

Description	Possible Lodging Dates	Price from (per. person)
10 Days Hunting for Elephant, Buffalo and Plainsgame, 1:1	1. June 2024 - 1. December 2024	\$34,995.00 (Observer \$3,795.00)
10 Days Hunting for Roan, Sable and Antelopes	1. June 2024 - 1. December 2024	\$22,495.00 (Observer \$3,795.00)
10 day hunt for Tuskless elephant, buffalo, hippo, crocodile and antelope 1: 1	1. June 2024 - 1. December 2024	\$21,995.00 (Observer \$3,795.00)
10 days hunting for Sitatunga, Sable and Plainsgame 1:1	1. June 2024 - 1. December 2024	\$22,495.00 (Observer \$3,795.00)
14 days hunting for Leopard and Plainsgame, 1:1	1. June 2024 - 1. December 2024	\$37,995.00 (Observer \$5,295.00)
21 days hunting for Lion, Buffalo and Plainsgame, 1:1	1. June 2024 - 1. December 2024	\$82,995.00 (Observer \$7,895.00)
21 days hunting for Lion, Leopard, Buffalo and plainsgame, 1:1	1. June 2024 - 1. December 2024	\$109,995.00 (Observer \$7,895.00)
7 day hunt of hippo, crocodile and antelope 1: 1	1. June 2024 - 1. December 2024	\$13,995.00 (Observer \$2,695.00)
7 days hunting for Sable and antelopes	1. June 2024 - 1. December 2024	\$16,495.00 (Observer \$2,695.00)
7 days hunting for Sitatunga and Plainsgame 1:1	1. June 2024 - 1. December 2024	\$18,995.00 (Observer \$2,695.00)

**DO YOU HAVE
QUESTIONS?**

Price and info on your tour

Specification of price

7 days hunting for buffalo and antelope 1:1	1. June 2024 - 1. December 2024	\$18,995.00 (Observer \$2,695.00)
7 days hunting of Tuskless elephant and antelopes (not buffalo) 1: 1	1. June 2024 - 1. December 2024	\$11,495.00 (Observer \$2,695.00)

The price includes

- Hunting with a professional hunter
- Accommodation in a hunting camp with full board and drinks (non alcoholic)
- Trophy preparation in camp
- Laundry service
- All transport during the hunt
- Concession Fee
- Hunting License (US\$ 900)
- Dip & Pack US\$ 1.500,-

The price does not include

- Flights
- Airport taxes
- Car transfers Lusaka – Hunting district US\$ 1.000-1.500,-
- If the hunt takes place in Lower Lupande, Charter flight to Mfuwe (US\$ 750)
- Trophy fees
- Shipment of trophies home
- Departure tax in Lusaka airport (30 US\$)
- Import duty on ammunition. (2 US\$/cartridge)
- Gratuities
- Any extra hotel accommodation before or after the hunt in Lusaka
- Travel and cancelation insurance
- EU-public liability insurance € 10,00.-
- Visa application and handling fees (EUR 85,- in total)
- Everything else not listed under “the price includes”

**DO YOU HAVE
QUESTIONS?**

Trophy Price List (USD)

Lion	\$42.495	-	Oribi	\$895
Baboon	\$245	-	Reedbuck	\$895
Chobe bushbuck	\$1.095	-	Bushpig	\$895
Buffalo	\$4.250	-	Warthog	\$850
Elephant	\$15.895	-	Sable	\$7.395
Leopard	\$10.595	-	Roan	\$7.395
Crocodile	\$3.195	-	Eland	\$5.295
Duiker	\$695	-	Waterbuck com.	\$1.850
Grysbok	\$895	-	Zebra	\$1.595
Hippo	\$3.195	-	Puku (10 jagtdage)	\$1.195
Hyena	\$1.095	-	Sitatunga	\$10.595
Hartebeest, Licht.	\$1.595	-	Black Lechwe	\$5.295
Impala	\$475	-	Tssesebe	\$3.695
Kudu	\$2.695	-	Vervet monkey	\$245
Tuskless Elephant	6.895	-	Waterbuck def.	3.195
Civet	1.195	-	Klipspringer	1.195
Cookson Wildebeast	4.795	-	Kafue Lechwe	5.295
Red Lechwe	7.395	-		

IMPORTANT: Regardless wether you book 7or10 days hunting, all the species you wish to hunt must be reserved at time of booking, otherwise there can unfortunately be no guarantee that the species desired will be available. Hunts should therefore be booked in good time (circa. 6-12 months in advance)

Wounded game = killed game + 16%VAT

Trophy fees are payable for all species either killed or wounded

**DO YOU HAVE
QUESTIONS?**



GAME Big Game hunt at Kwalata Safaris in Zambia



Red Lechwe/Black
Lechwe/Kafue



Vervet Monkey



Lion (Africa)



Impala



Sitatunga



Elephant (Africa)



Puku



Crocodile, Nile



Warthog



Hyena, Spotted



Grysbuck, Sharpe's



Duiker, Grey/Duiker,
Grimm's (Common)

To be continued on the next page...



GAME Big Game hunt at Kwalata Safaris in Zambia



Bush Pig



Bushbuck, Cape



Hartebeest, Lichtensteins



Sable Antelope (Africa)



Burchell's Zebra



Oribi



Sassabe



Waterbuck



Hippopotamus



Reedbuck (Common)



Baboon



Buffalo, Cape

To be continued on the next page...



GAME

Big Game hunt at Kwalata Safaris in Zambia



Leopard (Africa)



Kudu, Greater



Roan



Eland, Cape/Livingstone,
Patterson's

DO YOU HAVE
QUESTIONS?

About us

i

Limpopo & Diana Hunting Tours

Limpopo & Diana Hunting Tours Limpopo Travel and Diana Hunting Tours – which today are one and the same company - are built on more than four decades of experience in the hunting travel industry. Diana Hunting tours was founded in Svendborg back in 1974 by the internationally known figure in the hunting tour industry, Jan Krössteig, who today remains shareholder and chairman of the concern.

Over the years the company has grown into the world's largest hunting travel office, with hunting partners in more than 40 counties and customers from around the world. This has only been possible because of the strength of our customers faith in our company, our partners and the service we provide. We take great pride in the fact that a significant number of our customers are "regulars" you not only travel with us frequently, but also bring with them new customers into our business.

The hunting travel market has never been as chaotic as it is at present. There have always been a mass of small and medium sized agencies trading on the market, but in recent years the rise of the internet has really opened up the market for direct booking and packages sold by "agents" of more or less transparent character and by agencies based abroad.

A large number of hunters have had their fingers burnt booking "cheap" packages, which rarely proceed as promised. Generally it is only when things go wrong that the unfortunate hunter who bought the tour first realises what the difference between a good Danish travel agency - with all the security that entails - and a questionable foreign seller, really is.

What we offer our customers is a rather unique level of security. Our experienced staff really know our destinations and can provide highly qualified advice tailored to the customer's individual requirements. If you book your hunting tour through us you also have a guarantee against the unlikely event of bankruptcy through the Danish Travel Guarantee Fund. Our long standing membership of the Danish Travel Agency Association is also a guarantee for professional service throughout all the proceedings that a hunting tour entails - also in the event of something not going quite as planned. As one of our customers you can expect around the clock support, via our emergency hotline, in the event of anything at all going wrong.

**DO YOU HAVE
QUESTIONS?**